



KNOW YOUR COMMUNITY REPORT





KNOW YOUR COMMUNITY REPORT

You are reading one of the most important reports for your church.

If you don't know your community, then it is difficult to reach your community.

What makes the *Know Your Community* report so important?

Your church's address is not an accident. God sovereignly placed your church there to reach the people around you. Do you know them? This report will help you understand your neighbors. Jesus' Great Commandment (Matthew 22:34-40) gives clear instructions: Love your neighbor. Knowing your neighbor is the first step to loving your neighbor.

What is in this report?

The following pages will reveal what makes your community unique. This report includes two key attributes often used to describe a particular group of people: 1) Demographics and 2) Psychographics.

Demographics are *who* people are. Common demographics include age, gender, and ethnicity. These attributes are often external features not related to what a person believes or how a person behaves.

Psychographics are *what* people prefer. Common psychographics include motivations, beliefs, and priorities. These attributes are often internal features that are impossible to know without asking.

How should you read this report?

Undoubtedly, there is a lot of information here! You may need to read the report several times to process everything. Start with the first section, which includes several infographics. They make the data more accessible. Then move to the more detailed section. Look for surprises and confirmations. Surprises are those pieces of data you did not expect. Confirmations will corroborate what you already believe about your community.



KNOW YOUR COMMUNITY REPORT

What should you do with surprises and confirmations?

Surprises reveal areas of needed ministry. For example, if your community is younger than anticipated, then you should examine your ministries to see if they are aligned with reaching this demographic.

Confirmations reveal areas of focus. If you know your community is ethnically diverse, and this report corroborates your perception, then your church should stay focused on ethnic diversity.

How is the community defined?

In most cases, we use drive time to determine the boundaries of the community. Common drive times are ten minutes (for more dense communities) and twenty minutes (for less dense communities). We use drive time for a few reasons:

- Other reports use a radius around the location to determine the community. But a radius definition often draws in features that distort data. A large lake or a major highway can alter the results when included in a radius. Drive time works around these distortions for a clearer picture of the actual community.
- Drive time is an easy way to grasp your community. Other reports use zip codes to determine the community, but most people do not quickly recall where one zip code ends and another begins.

In select cases, we will use either a radius or zip codes to determine the boundaries of the community. Some locations require a different approach than drive time.

How accurate is the data?

We partner with ESRI to produce these reports. ESRI's software is the most powerful mapping and spatial data analytics technology available.



KNOW YOUR COMMUNITY REPORT

How was the *Know Your Community* report created?

Our team spent months developing a proprietary process that assembles the most relevant data for your church. Billions of data points exist within ESRI's systems. We've streamlined an approach that brings you the most pertinent features of your community in a way that is understandable.

What is tapestry segmentation?

A special report called "Tapestry Segmentation" is in the detailed section following the infographics. It's one of the unique features of the *Know Your Community* report. Tapestry segmentation classifies neighborhoods into sixty-seven unique segments based on both demographics and psychographics. Several easy-to-understand terms are used to describe communities. You will read terms like "Rooted Rural" and "Rustbelt Traditions" and "Up and Coming Families." The below picture demonstrates the uniqueness of communities in the United States. Tapestry segmentation is a way to understand the nuances of your neighborhood.



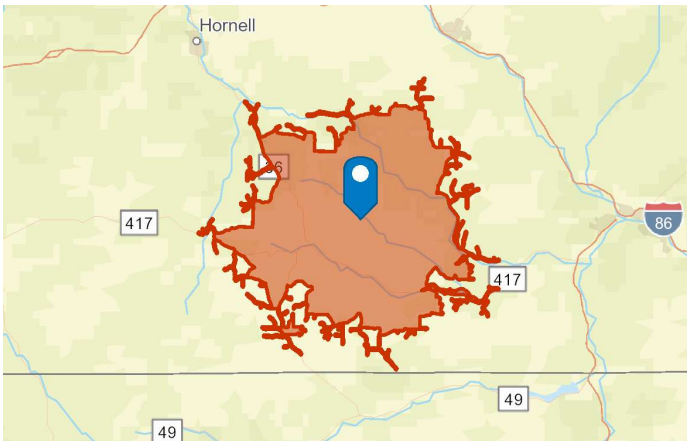


KNOW YOUR COMMUNITY REPORT

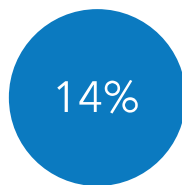
Look at your top ten tapestry segmentations. Likely, the top ten segments make up most of your community. Then [click here](#) to find many more details about each segment. Read about your top ten segments and take notes about what surprises you and what confirms your perceptions about your community. This exercise may take a couple of hours, but you will learn a lot about the people in your community.

Boyd's Corners Bible Church

4740 County Route 21, Jasper, New York, 14855



EDUCATION



No High School Diploma



46%
High School Graduate



29%
Some College



11%
Bachelor's/Grad/Prof Degree

KEY FACTS

4,619

Population



Median Age



Average Household Size

\$51,933

Median Household Income

BUSINESS



84

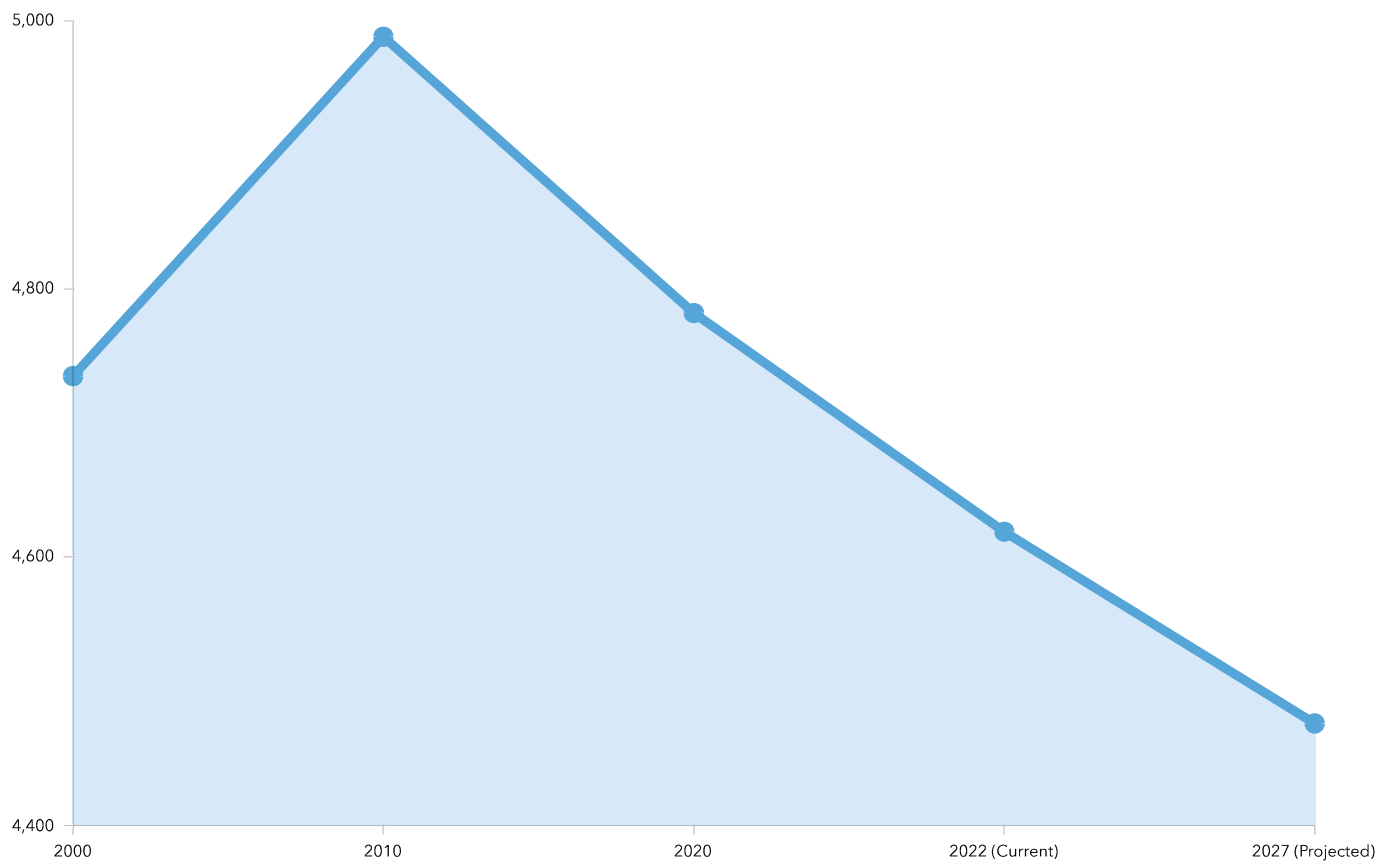
Total Businesses



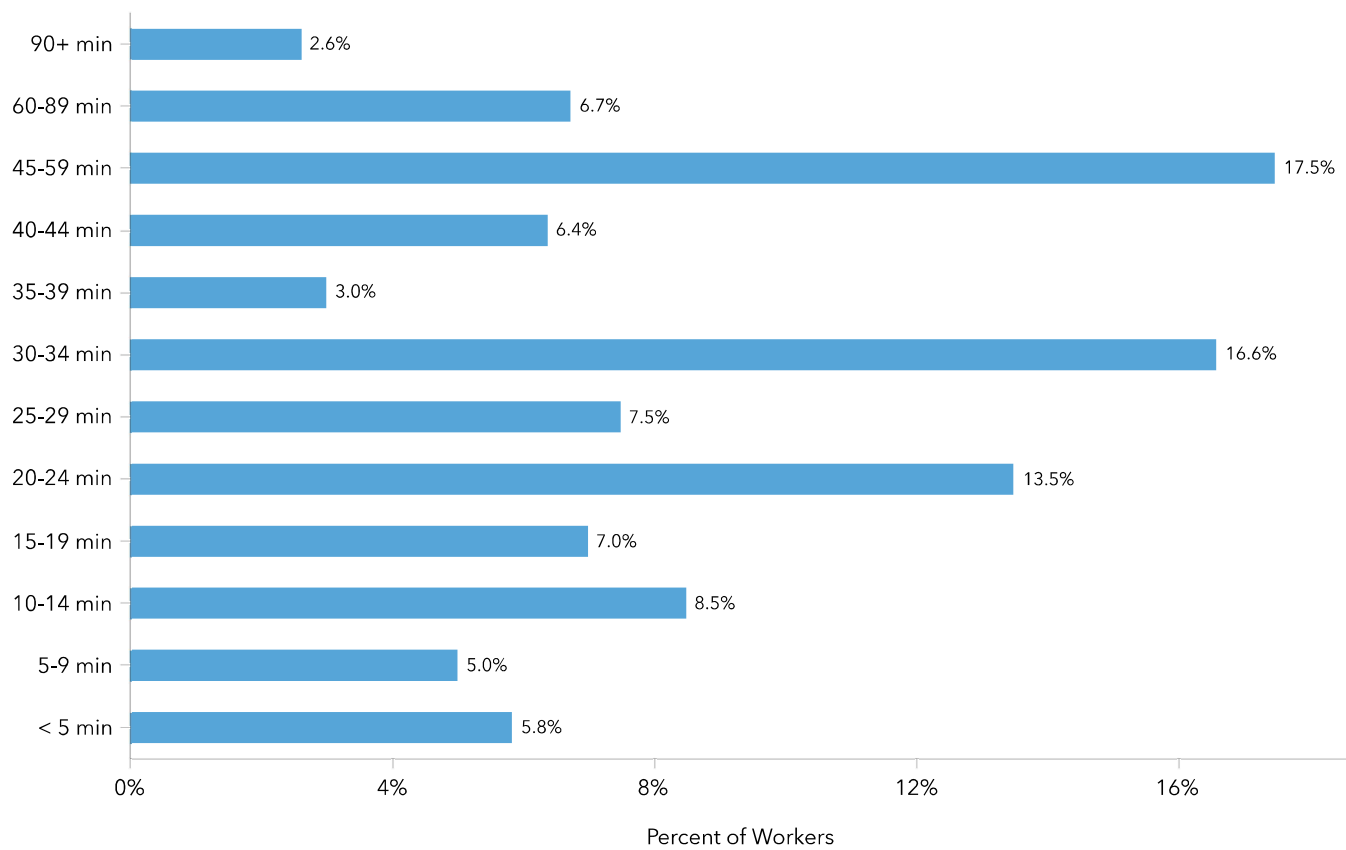
621

Total Employees

HISTORICAL, CURRENT, & PROJECTED POPULATION TOTALS

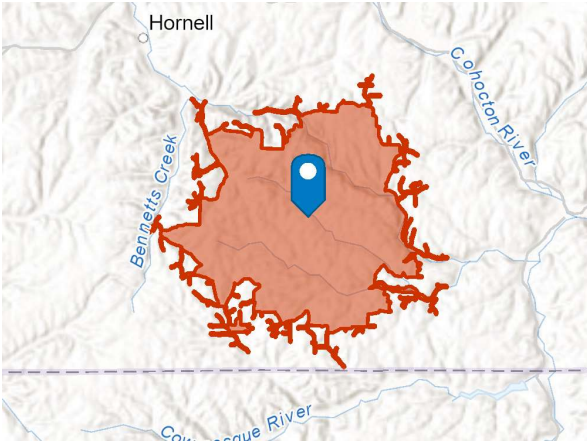


TRAVEL TIME TO WORK

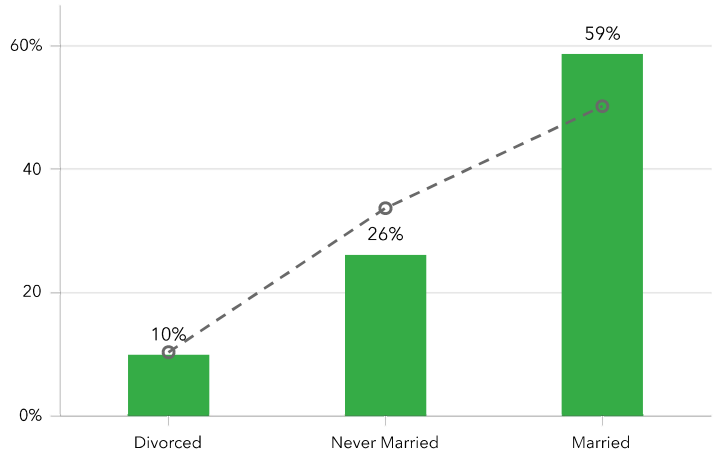


Boyd's Corners Bible Church

4740 County Route 21, Jasper, New York, 14855

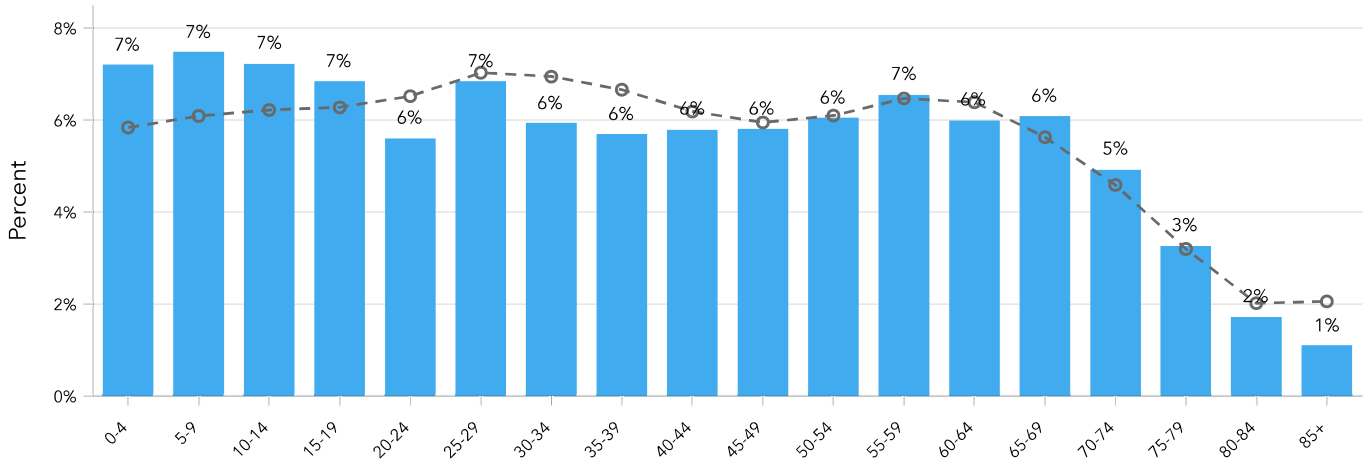


CURRENT ADULT MARRIAGE % (vs NATIONAL AVG)



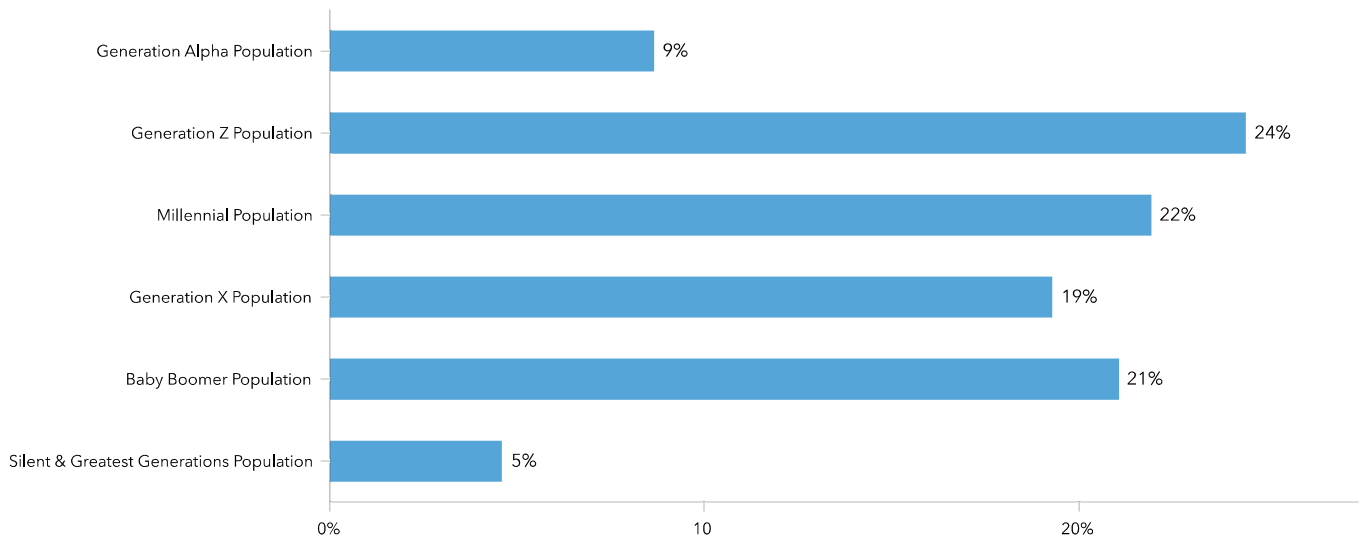
Dots show comparison to **United States**

CURRENT AGE PROFILE (vs NATIONAL AVERAGE)



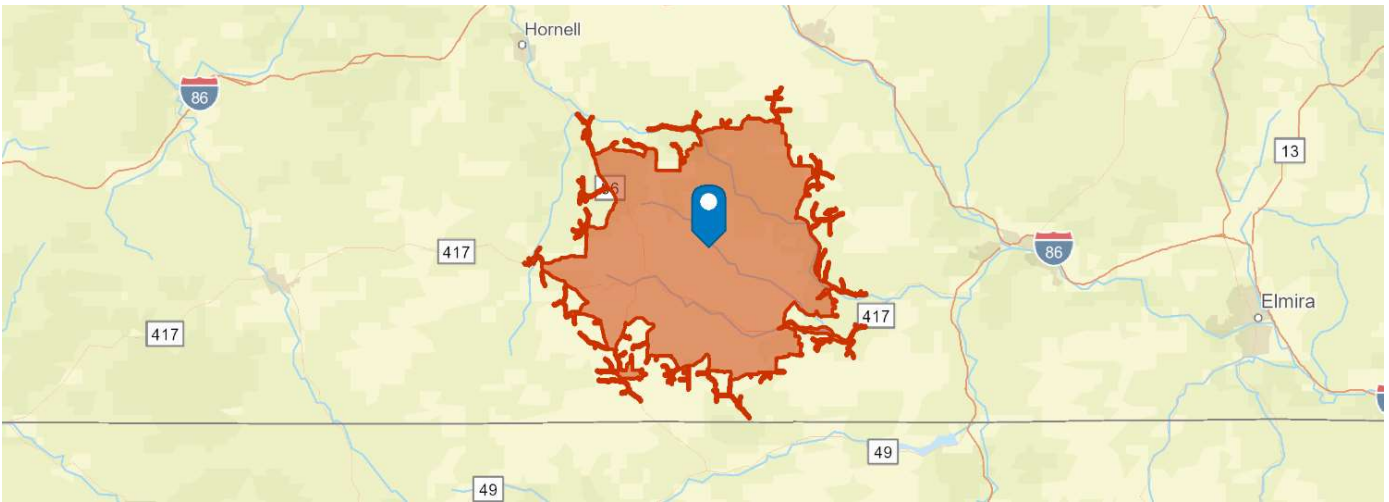
Dots show comparison to **United States**

CURRENT GENERATIONAL MIX

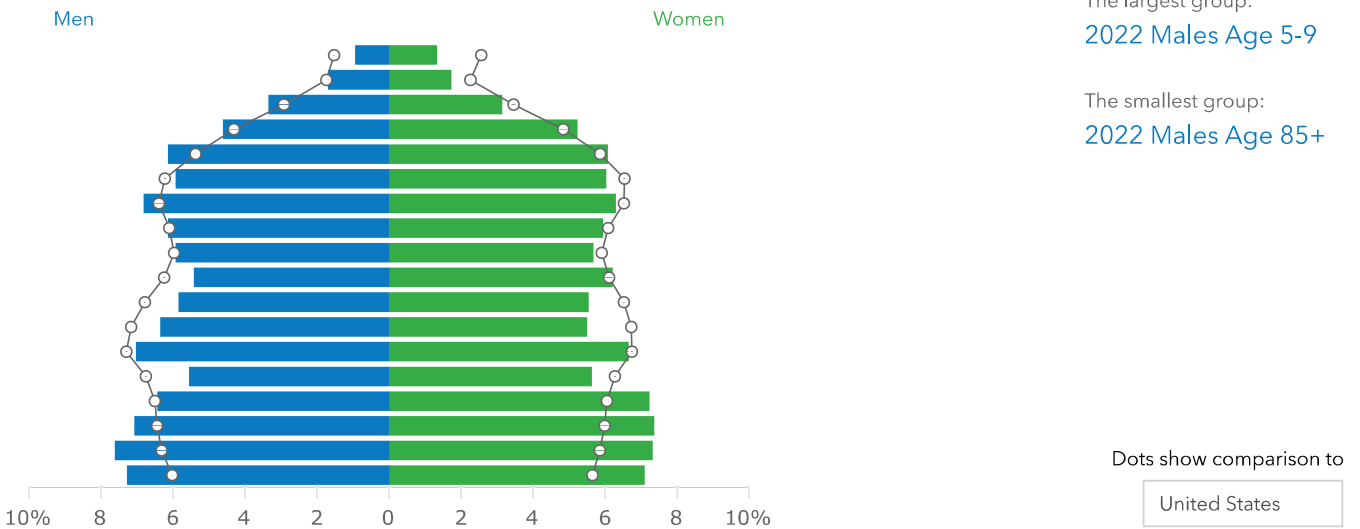


Boyd's Corners Bible Church

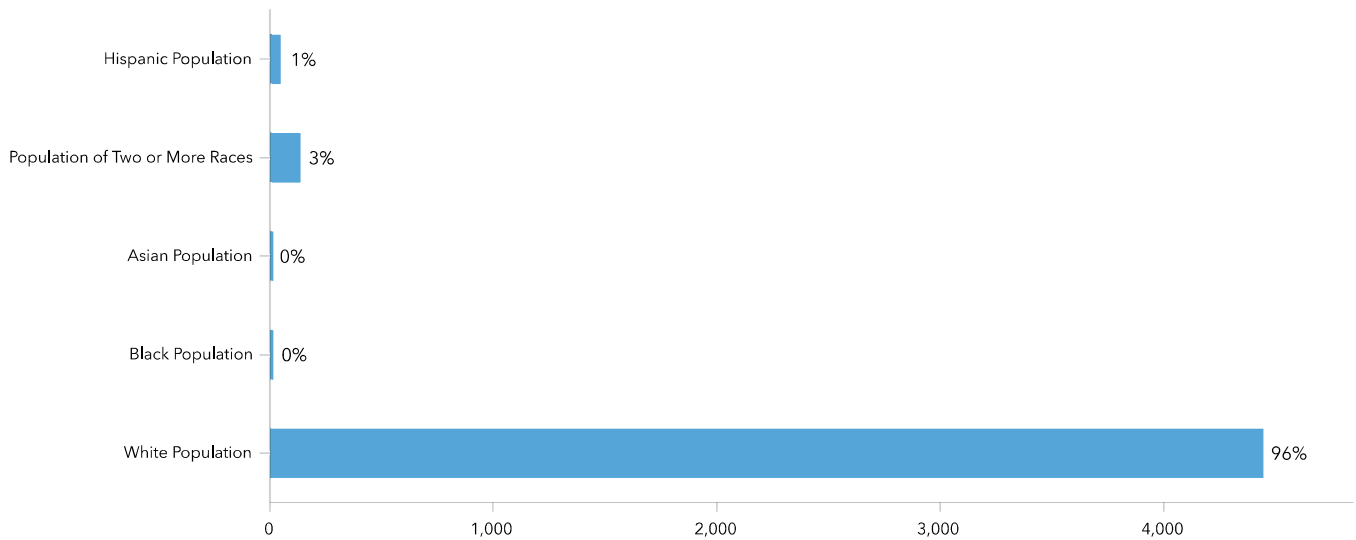
4740 County Route 21, Jasper, New York, 14855



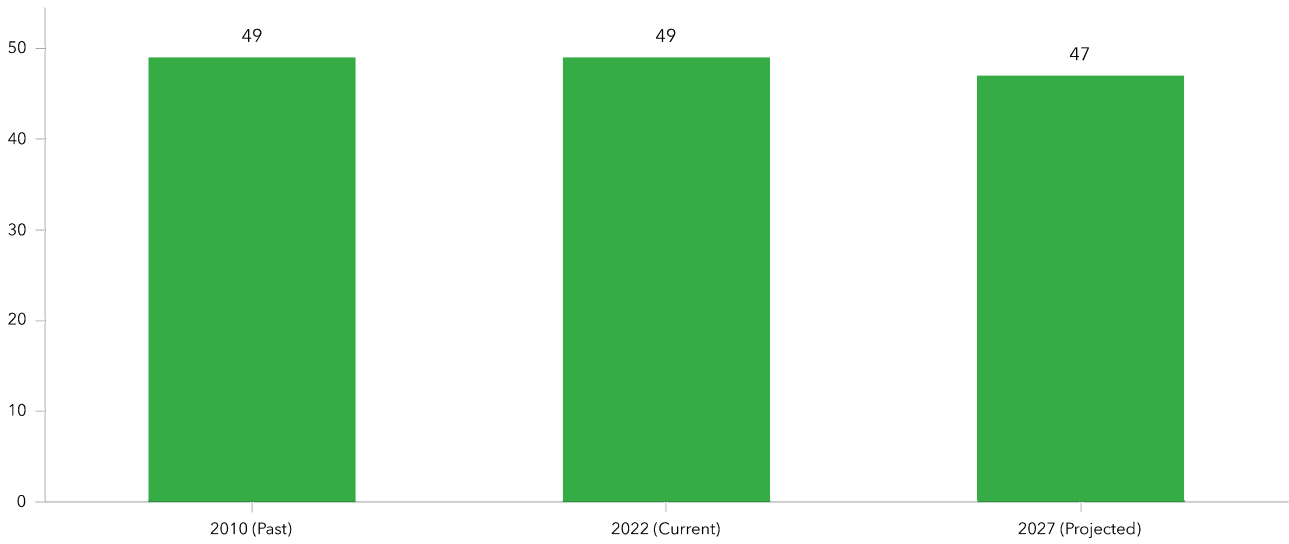
Age Pyramid



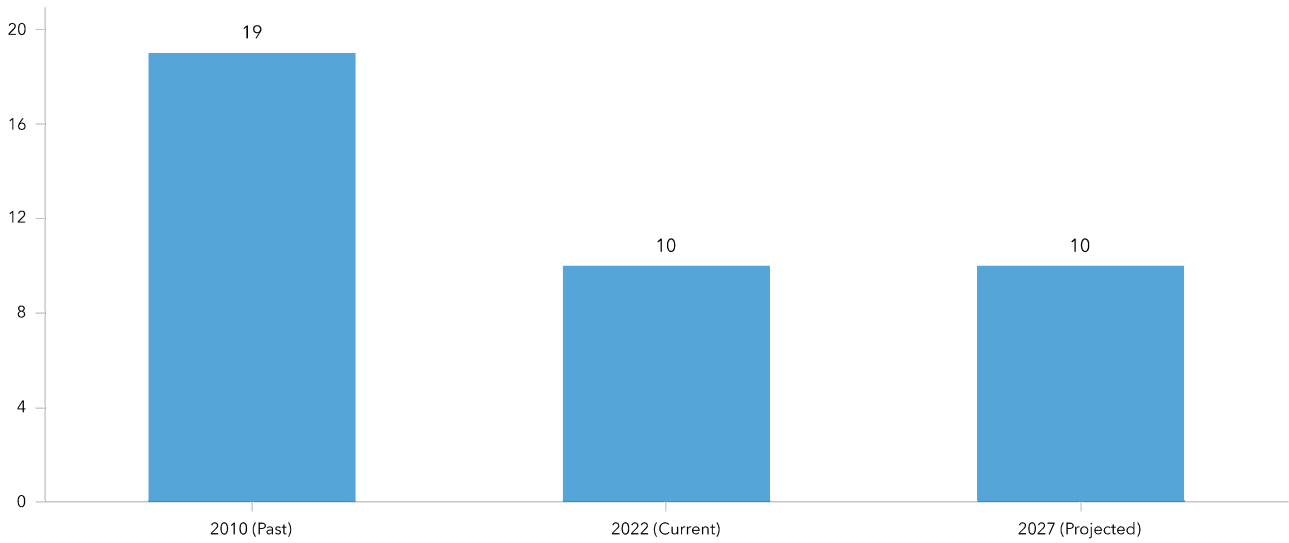
CURRENT POPULATION BY RACE



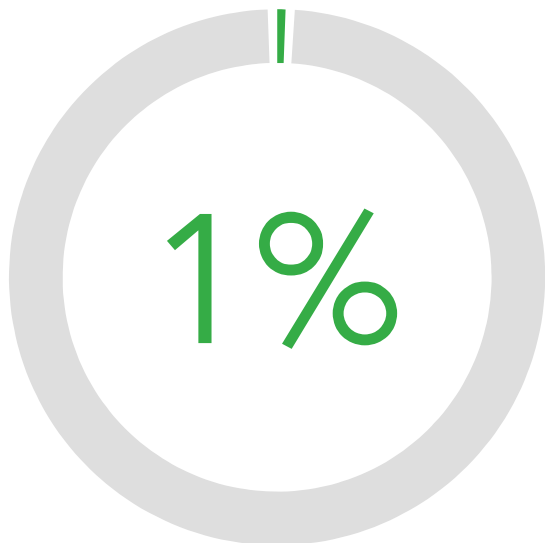
HISPANIC POPULATION (PAST, CURRENT, & PROJECTED)



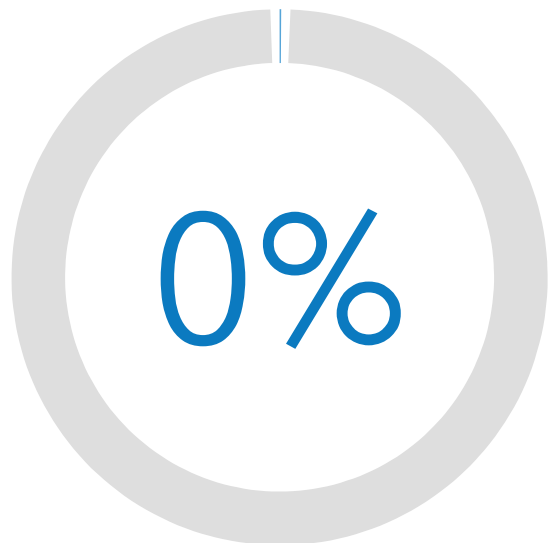
BLACK POPULATION (PAST, CURRENT, & PROJECTED)



2027 PROJECTED HISPANIC POPULATION %

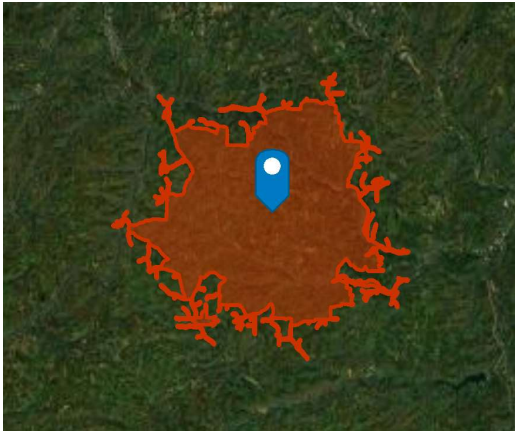


2027 PROJECTED BLACK POPULATION %



Boyd's Corners Bible Church

4740 County Route 21, Jasper, New York, 14855



Households By Income

The largest group: \$50,000 - \$74,999 (17.7%)

The smallest group: \$200,000+ (1.6%)

Indicator ▲	Value	Diff
<\$15,000	10.4%	+1.9%
\$15,000 - \$24,999	12.7%	+5.5%
\$25,000 - \$34,999	12.1%	+4.6%
\$35,000 - \$49,999	12.8%	+1.7%
\$50,000 - \$74,999	17.7%	+0.8%
\$75,000 - \$99,999	13.4%	+0.2%
\$100,000 - \$149,999	16.1%	-1.1%
\$150,000 - \$199,999	3.2%	-5.2%
\$200,000+	1.6%	-8.3%

Bars show deviation from United States

POPULATION BY GENERATION



4.6%

Greatest Gen:
Born 1945/Earlier



21.1%

Baby Boomer:
Born 1946 to 1964



19.3%

Generation X:
Born 1965 to 1980



21.9%

Millennial:
Born 1981 to 1998



24.5%

Generation Z:
Born 1999 to 2016



8.7%

Alpha: Born
2017 to Present

Race and Ethnicity

The largest group: White Alone (96.23)

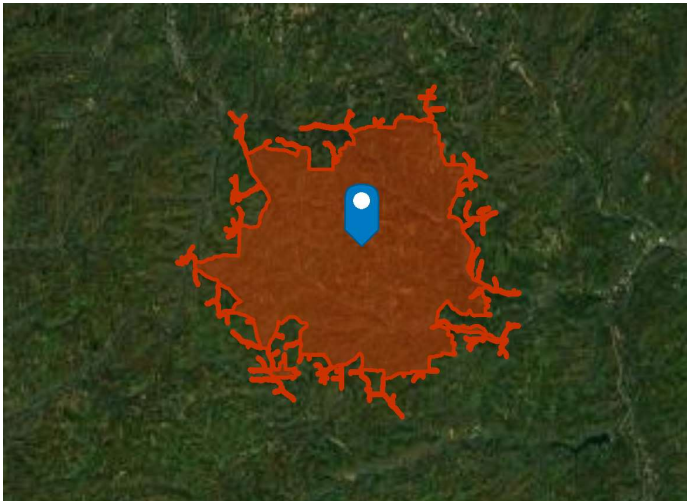
The smallest group: Pacific Islander Alone (0.02)

Indicator ▲	Value	Diff
White Alone	96.23	+35.24
Black Alone	0.22	-12.17
American Indian/Alaska Native Alone	0.06	-1.08
Asian Alone	0.09	-6.03
Pacific Islander Alone	0.02	-0.19
Other Race	0.39	-8.16
Two or More Races	2.99	-7.60
Hispanic Origin (Any Race)	1.06	-17.89

Bars show deviation from United States

Boyd's Corners Bible Church

4740 County Route 21, Jasper, New York, 14855



POVERTY



246

Households Below the Poverty Level



15%

Households Below the Poverty Level



3%

Households with Public Assistance Income



9%

Households Receiving Food Stamps/SNAP

HEALTHCARE COST STRUGGLES



980

Somewhat Struggles with Healthcare Costs



604

Completely Struggles with Healthcare Costs

HOUSING STATS



\$138,443

Median Home Value



\$7,385

Average Spent on Mortgage & Basics



\$455

Median Contract Rent

EMPLOYMENT



47%

White Collar



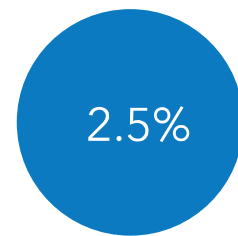
43%

Blue Collar



11%

Services



Unemployment Rate

AT RISK POPULATION



46

Unemployed
Population Age 16+



191

Population Age 15+:
Widowed

AT RISK POPULATION



477

Households
With Disability



787

Population
65+



212

Households
Without
Vehicle

HOUSEHOLDS WITH PETS



55%

Owns a
Dog



35%

Owns a Cat



67%

Owns Any
Pet

HOUSEHOLDS WITH CHILDREN



405

Married with
Children



94

Single
Mothers



73

Single
Fathers

ANNUAL HOUSEHOLD SPENDING



\$1,538

Apparel & Services



\$113

Computers &
Hardware



\$2,854

Eating Out



\$4,382

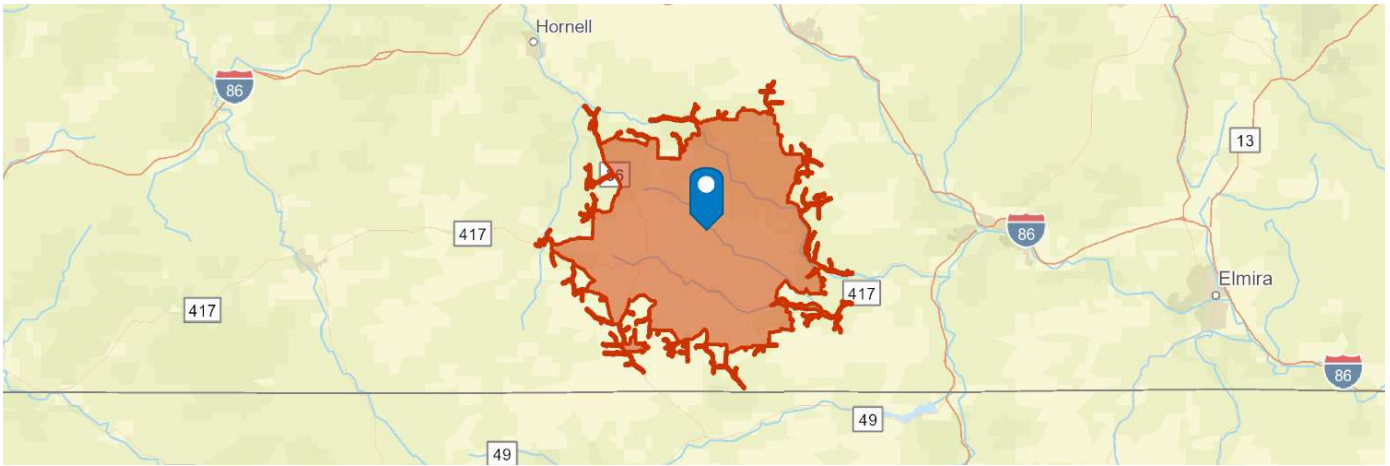
Groceries



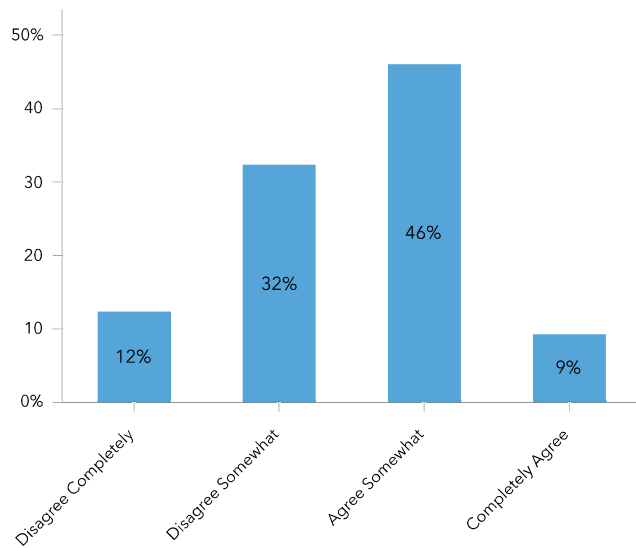
\$5,437

Health Care

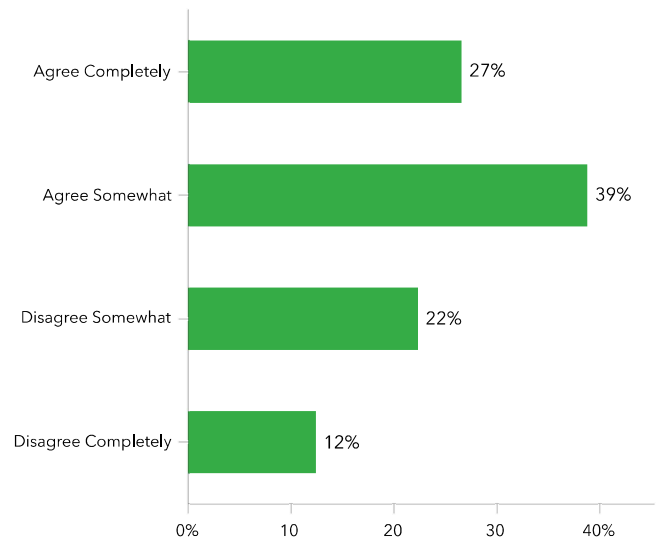
Boyd's Corners Bible Church



DO YOU HAVE HEALTHY EATING HABITS?



DO YOU EXERCISE REGULARLY?



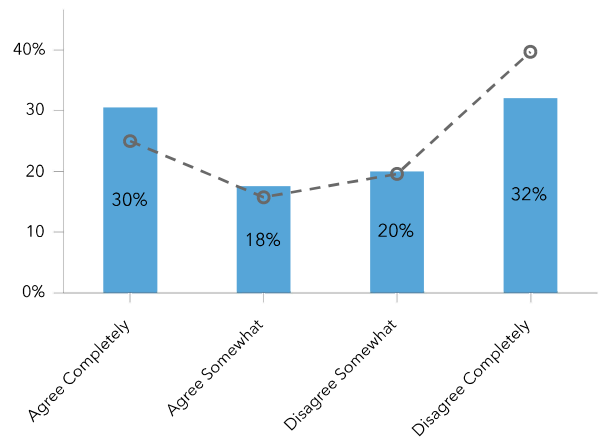
VOLUNTEERED FOR A CHARITABLE ORG



14% ↓

Volunteered for a Charitable Organization Last 12 Mo (%) is 2% lower than **United States**, which has a value of 17%

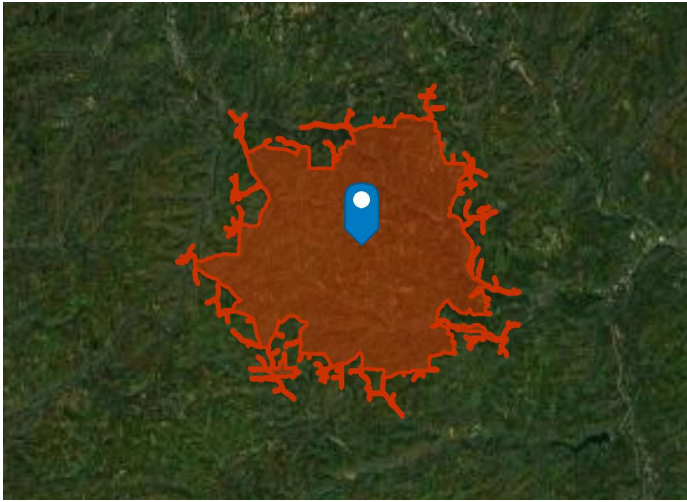
DO YOU ATTEND RELIGIOUS SERVICES REGULARLY? (vs NATIONAL AVERAGE)



Dots show comparison to **Steuben County**

Boyd's Corners Bible Church

4740 County Route 21, Jasper, New York, 14855



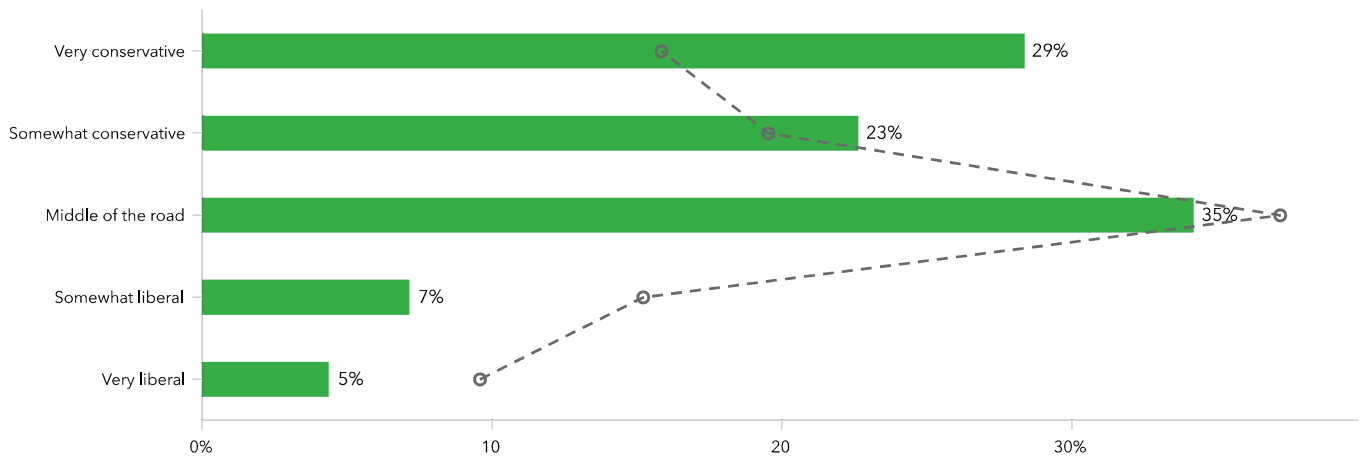
CONTRIBUTED TO A RELIGIOUS ORGANIZATION



28% ↑

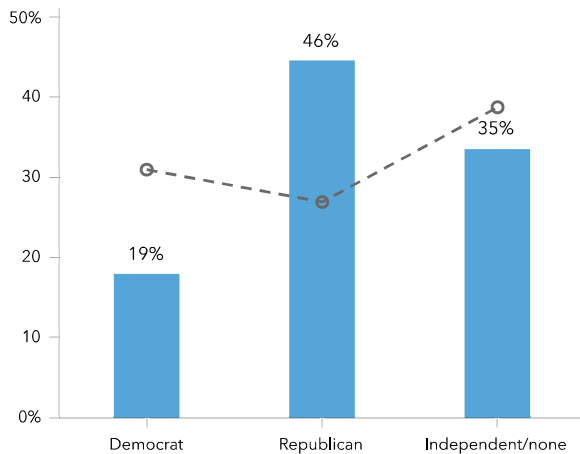
Contributed to Religious Organization Last 12 Mo (%) is 2% higher than **United States**, which has a value of 25%

SELF-REPORTED POLITICAL LEANING (vs NATIONAL AVERAGE)



Dots show comparison to **United States**

POLITICAL AFFILIATION (vs NATIONAL AVG)



Dots show comparison to **United States**

Know Your Community

Report Powered By:



ChurchAnswers.com



ACS Population Summary

Boyd's Corners Bible Church
 4740 County Route 21, Jasper, New York, 14855
 Drive Time: 20 minute radius

Prepared by Esri
 Latitude: 42.15330
 Longitude: -77.44231

	2016-2020 ACS Estimate	Percent	MOE(±)	Reliability
TOTALS				
Total Population	4,838		99	
Total Households	1,673		29	
Total Housing Units	2,325		36	
POPULATION AGE 3+ YEARS BY SCHOOL ENROLLMENT				
Total	4,557	100.0%	86	
Enrolled in school	940	20.6%	33	
Enrolled in nursery school, preschool	66	1.4%	8	
Public school	55	1.2%	8	
Private school	10	0.2%	8	
Enrolled in kindergarten	53	1.2%	6	
Public school	40	0.9%	5	
Private school	12	0.3%	10	
Enrolled in grade 1 to grade 4	228	5.0%	13	
Public school	169	3.7%	9	
Private school	60	1.3%	10	
Enrolled in grade 5 to grade 8	209	4.6%	13	
Public school	150	3.3%	13	
Private school	59	1.3%	17	
Enrolled in grade 9 to grade 12	245	5.4%	15	
Public school	236	5.2%	15	
Private school	9	0.2%	7	
Enrolled in college undergraduate years	116	2.5%	18	
Public school	81	1.8%	13	
Private school	35	0.8%	33	
Enrolled in graduate or professional school	23	0.5%	11	
Public school	18	0.4%	15	
Private school	6	0.1%	7	
Not enrolled in school	3,617	79.4%	52	
POPULATION AGE 65+ BY RELATIONSHIP AND HOUSEHOLD TYPE				
Total	756	100.0%	22	
Living in Households	754	99.7%	22	
Living in Family Households	521	68.9%	23	
Householder	261	34.5%	14	
Spouse	208	27.5%	10	
Parent	28	3.7%	11	
Parent-in-law	6	0.8%	6	
Other Relative	12	1.6%	6	
Nonrelative	6	0.8%	2	
Living in Nonfamily Households	233	30.8%	11	
Householder	206	27.2%	10	
Nonrelative	26	3.4%	6	
Living in Group Quarters	2	0.3%	3	



ACS Population Summary

Boyd's Corners Bible Church
 4740 County Route 21, Jasper, New York, 14855
 Drive Time: 20 minute radius

Prepared by Esri
 Latitude: 42.15330
 Longitude: -77.44231

	2016-2020 ACS Estimate	Percent	MOE(±)	Reliability
HOUSEHOLDS BY TYPE AND SIZE				
Family Households	1,253	74.9%	28	
2-Person	561	33.5%	18	
3-Person	285	17.0%	16	
4-Person	173	10.3%	18	
5-Person	89	5.3%	10	
6-Person	62	3.7%	6	
7+ Person	82	4.9%	12	
Nonfamily Households	420	25.1%	14	
1-Person	322	19.2%	12	
2-Person	87	5.2%	10	
3-Person	10	0.6%	8	
4-Person	1	0.1%	4	
5-Person	1	0.1%	5	
6-Person	0	0.0%	0	
7+ Person	0	0.0%	0	
HOUSEHOLDS BY PRESENCE OF PEOPLE UNDER 18 YEARS BY HOUSEHOLD TYPE				
Households with one or more people under 18 years	574	34.3%	21	
Family households	572	34.2%	21	
Married-couple family	405	24.2%	19	
Male householder, no wife present	73	4.4%	16	
Female householder, no husband present	94	5.6%	13	
Nonfamily households	2	0.1%	9	
Households with no people under 18 years	1,099	65.7%	22	
Married-couple family	577	34.5%	19	
Other family	104	6.2%	12	
Nonfamily households	418	25.0%	14	
HOUSEHOLDS BY PRESENCE OF PEOPLE 65 YEARS AND OVER, HOUSEHOLD SIZE AND HOUSEHOLD TYPE				
Households with Pop 65+	501	29.9%	15	
1-Person	174	10.4%	9	
2+ Person Family	300	17.9%	15	
2+ Person Nonfamily	28	1.7%	6	
Households with No Pop 65+	1,171	70.0%	27	
1-Person	148	8.8%	10	
2+ Person Family	953	57.0%	25	
2+ Person Nonfamily	70	4.2%	11	
HOUSEHOLD TYPE BY RELATIVES AND NONRELATIVES FOR POPULATION IN HOUSEHOLDS				
Total	4,833	100.0%	99	
In Family Households	4,284	88.6%	102	
In Married-Couple Family	3,388	70.1%	94	
Relatives	3,358	69.5%	94	
Nonrelatives	30	0.6%	9	
In Male Householder-No Spouse Present-Family	330	6.8%	42	
Relatives	291	6.0%	38	
Nonrelatives	39	0.8%	10	
In Female Householder-No Spouse Present-Family	566	11.7%	52	
Relatives	504	10.4%	53	
Nonrelatives	62	1.3%	13	
In Nonfamily Households	550	11.4%	21	

Source: U.S. Census Bureau, 2016-2020 American Community Survey

Reliability: high medium low

August 15, 2022



ACS Population Summary

Boyd's Corners Bible Church
 4740 County Route 21, Jasper, New York, 14855
 Drive Time: 20 minute radius

Prepared by Esri
 Latitude: 42.15330
 Longitude: -77.44231

	2016-2020 ACS Estimate	Percent	MOE(±)	Reliability
POPULATION AGE 5+ YEARS BY LANGUAGE SPOKEN AT HOME AND ABILITY TO SPEAK ENGLISH				
Total	4,359	100.0%	81	
5 to 17 years				
Speak only English	605	13.9%	26	
Speak Spanish	11	0.3%	6	
Speak English "very well" or "well"	11	0.3%	6	
Speak English "not well"	0	0.0%	0	
Speak English "not at all"	0	0.0%	0	
Speak other Indo-European languages	202	4.6%	44	
Speak English "very well" or "well"	129	3.0%	35	
Speak English "not well"	53	1.2%	11	
Speak English "not at all"	20	0.5%	5	
Speak Asian and Pacific Island languages	0	0.0%	0	
Speak English "very well" or "well"	0	0.0%	0	
Speak English "not well"	0	0.0%	0	
Speak English "not at all"	0	0.0%	0	
Speak other languages	0	0.0%	0	
Speak English "very well" or "well"	0	0.0%	0	
Speak English "not well"	0	0.0%	0	
Speak English "not at all"	0	0.0%	0	
18 to 64 years				
Speak only English	2,378	54.6%	56	
Speak Spanish	10	0.2%	6	
Speak English "very well" or "well"	8	0.2%	8	
Speak English "not well"	2	0.0%	3	
Speak English "not at all"	0	0.0%	0	
Speak other Indo-European languages	394	9.0%	61	
Speak English "very well" or "well"	378	8.7%	55	
Speak English "not well"	16	0.4%	47	
Speak English "not at all"	0	0.0%	0	
Speak Asian and Pacific Island languages	1	0.0%	15	
Speak English "very well" or "well"	1	0.0%	15	
Speak English "not well"	0	0.0%	0	
Speak English "not at all"	0	0.0%	0	
Speak other languages	3	0.1%	6	
Speak English "very well" or "well"	3	0.1%	6	
Speak English "not well"	0	0.0%	0	
Speak English "not at all"	0	0.0%	0	
65 years and over				
Speak only English	745	17.1%	22	
Speak Spanish	5	0.1%	3	
Speak English "very well" or "well"	5	0.1%	3	
Speak English "not well"	0	0.0%	0	
Speak English "not at all"	0	0.0%	0	
Speak other Indo-European languages	6	0.1%	3	
Speak English "very well" or "well"	6	0.1%	3	
Speak English "not well"	0	0.0%	0	
Speak English "not at all"	0	0.0%	0	
Speak Asian and Pacific Island languages	1	0.0%	15	
Speak English "very well" or "well"	0	0.0%	4	
Speak English "not well"	0	0.0%	4	
Speak English "not at all"	0	0.0%	0	
Speak other languages	0	0.0%	0	
Speak English "very well" or "well"	0	0.0%	0	
Speak English "not well"	0	0.0%	0	
Speak English "not at all"	0	0.0%	0	



ACS Population Summary

Boyd's Corners Bible Church
 4740 County Route 21, Jasper, New York, 14855
 Drive Time: 20 minute radius

Prepared by Esri
 Latitude: 42.15330
 Longitude: -77.44231

	2016-2020 ACS Estimate	Percent	MOE(±)	Reliability
WORKERS AGE 16+ YEARS BY PLACE OF WORK				
Total	1,907	100.0%	42	High
Worked in state and in county of residence	1,533	80.4%	39	High
Worked in state and outside county of residence	262	13.7%	14	High
Worked outside state of residence	113	5.9%	20	High
SEX BY CLASS OF WORKER FOR THE CIVILIAN EMPLOYED POPULATION 16 YEARS AND OVER				
Total:	1,955	100.0%	42	High
Male:	1,093	55.9%	29	High
Employee of private company	632	32.3%	21	High
Self-employed in own incorporated business	50	2.6%	8	High
Private not-for-profit wage and salary workers	33	1.7%	6	High
Local government workers	124	6.3%	24	High
State government workers	52	2.7%	15	Medium
Federal government workers	15	0.8%	4	Medium
Self-employed in own not incorporated business workers	188	9.6%	25	High
Unpaid family workers	0	0.0%	0	High
Female:	862	44.1%	21	High
Employee of private company	426	21.8%	16	High
Self-employed in own incorporated business	33	1.7%	9	Medium
Private not-for-profit wage and salary workers	126	6.4%	14	High
Local government workers	113	5.8%	17	High
State government workers	36	1.8%	7	High
Federal government workers	52	2.7%	14	Medium
Self-employed in own not incorporated business workers	75	3.8%	14	High
Unpaid family workers	0	0.0%	1	High
POPULATION IN HOUSEHOLDS AND PRESENCE OF A COMPUTER				
Total	4,833	100.0%	99	High
Population <18 in Households	1,296	26.8%	54	High
Have a Computer	877	18.1%	38	High
Have NO Computer	419	8.7%	67	High
Population 18-64 in Households	2,783	57.6%	61	High
Have a Computer	2,318	48.0%	56	High
Have NO Computer	466	9.6%	49	High
Population 65+ in Households	754	15.6%	22	High
Have a Computer	557	11.5%	19	High
Have NO Computer	197	4.1%	13	High
HOUSEHOLDS AND INTERNET SUBSCRIPTIONS				
Total	1,673	100.0%	29	High
With an Internet Subscription	1,223	73.1%	24	High
Dial-Up Alone	24	1.4%	5	Medium
Broadband	803	48.0%	23	High
Satellite Service	217	13.0%	17	High
Other Service	43	2.6%	13	Medium
Internet Access with no Subscription	19	1.1%	4	Medium
With No Internet Access	430	25.7%	20	High



ACS Population Summary

Boyd's Corners Bible Church
 4740 County Route 21, Jasper, New York, 14855
 Drive Time: 20 minute radius

Prepared by Esri
 Latitude: 42.15330
 Longitude: -77.44231

	2016-2020 ACS Estimate	Percent	MOE(±)	Reliability
WORKERS AGE 16+ YEARS BY MEANS OF TRANSPORTATION TO WORK				
Total	1,907	100.0%	42	
Drove alone	1,373	72.0%	37	
Carpooled	335	17.6%	21	
Public transportation (excluding taxicab)	10	0.5%	5	
Bus or trolley bus	10	0.5%	5	
Light rail, streetcar or trolley	0	0.0%	0	
Subway or elevated	0	0.0%	0	
Long-distance/Commuter Train	0	0.0%	0	
Ferryboat	0	0.0%	0	
Taxicab	0	0.0%	0	
Motorcycle	0	0.0%	0	
Bicycle	0	0.0%	0	
Walked	74	3.9%	15	
Other means	12	0.6%	9	
Worked at home	103	5.4%	16	
WORKERS AGE 16+ YEARS (WHO DID NOT WORK FROM HOME) BY TRAVEL TIME TO WORK				
Total	1,804	100.0%	41	
Less than 5 minutes	105	5.8%	31	
5 to 9 minutes	90	5.0%	8	
10 to 14 minutes	153	8.5%	12	
15 to 19 minutes	126	7.0%	8	
20 to 24 minutes	243	13.5%	21	
25 to 29 minutes	135	7.5%	19	
30 to 34 minutes	299	16.6%	18	
35 to 39 minutes	54	3.0%	13	
40 to 44 minutes	115	6.4%	12	
45 to 59 minutes	315	17.5%	19	
60 to 89 minutes	121	6.7%	9	
90 or more minutes	47	2.6%	5	
Average Travel Time to Work (in minutes)	N/A		N/A	
FEMALES AGE 20-64 YEARS BY AGE OF OWN CHILDREN AND EMPLOYMENT STATUS				
Total	1,317	100.0%	33	
Own children under 6 years only	113	8.6%	22	
In labor force	61	4.6%	13	
Not in labor force	52	3.9%	18	
Own children under 6 years and 6 to 17 years	113	8.6%	8	
In labor force	40	3.0%	6	
Not in labor force	72	5.5%	8	
Own children 6 to 17 years only	262	19.9%	13	
In labor force	196	14.9%	12	
Not in labor force	67	5.1%	8	
No own children under 18 years	829	62.9%	29	
In labor force	520	39.5%	19	
Not in labor force	309	23.5%	20	